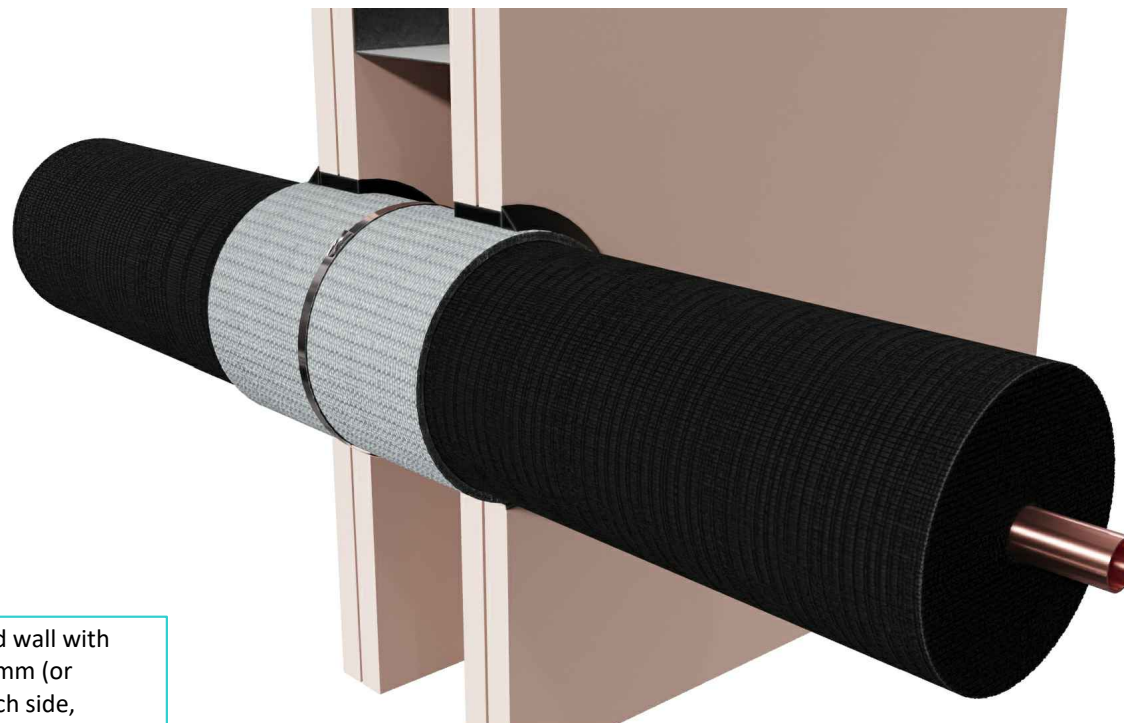




### Step-by-step installation instructions:

1. Wrap one revolution of a 140mm wide AGNI-Sleeve around the service.
2. Insert the AGNI-Sleeve into the aperture, protruding 10mm past the lining on each side of the wall.
3. Apply 10mm (nominal) deep AGNI-Black sealant into the gap between the AGNI-Sleeve and the wall.

**NOTE:** See pages 2-5 for detailed line drawings of system options



### Technical Information

Substrate	<ul style="list-style-type: none"><li>• Min. 64mm timber or steel stud wall with a minimum of two layers of 13mm (or greater) FR plasterboard on each side, with or without insulation.</li><li>• Min. 116mm concrete wall</li></ul>
Service range	From DN15mm up to DN50mm copper pipe with nitrile rubber insulation from 9mm up to 38mm thick
Annular gap	DN15mm - 9.8 - 11.2mm DN20mm - 6.8 - 11.5mm DN50mm with 13mm insulation - 10.5 - 12.5mm
AGNI-Products	DN50mm with 32mm insulation - 8.9 - 11.1mm
	AGNI-Black, AGNI-Sleeve
Protection installation	From both sides of the wall

### Compliance Information

Standards	AS1530.4-2014, AS4072.1-2005
FRR/FRL	-/120/120
Reference	RIRF25008

#### Disclaimer

Agnitek reserves the right to modify product specifications without prior notice due to its ongoing research, development & certification programme. The information in this document is provided in good faith and is intended for guidance purposes only. Any accompanying drawings are solely for illustrative purposes. Since Agnitek cannot oversee installation methods or ensure site conditions, no warranties, expressed or implied, are intended regarding the products' actual performance. We do not accept liability for any loss, damage, or injury from using this information. Please take a look at the test reports displayed on a relevant AGNI-System webpage for all compliance specifics.



# FIRESTOP CENTRE

Authorised New Zealand Distributor  
Ph (09) 483 4000 [www.firestopcentre.co.nz](http://www.firestopcentre.co.nz)

64 mm steel stud

System ID# FC361

2 layers of 13mm  
FR plasterboard

DN15mm Copper pipe with  
38mm thick nitrile rubber  
insulation

AGNI-Black

AGNI-Sleeve

## Technical Information

Substrate	<ul style="list-style-type: none"><li>Min. 64mm timber or steel stud wall with a minimum of two layers of 13mm (or greater) FR plasterboard on each side, with or without insulation.</li><li>Min. 116mm concrete wall</li></ul>
Service range	From DN15mm up to DN50mm copper pipe with nitrile rubber insulation from 9mm up to 38mm thick
Annular gap	DN15mm - 9.8 - 11.2mm DN20mm - 6.8 - 11.5mm DN50mm with 13mm insulation - 10.5 - 12.5mm DN50mm with 32mm insulation - 8.9 - 11.1mm
AGNI-Products	AGNI-Black, AGNI-Sleeve
Protection installation	From both sides of the wall

## Compliance Information

Standards	AS1530.4-2014, AS4072.1-2005
FRR/FRL	-/120/120
Reference	RIRF25008

### Disclaimer

Agnitek reserves the right to modify product specifications without prior notice due to its ongoing research, development & certification programme. The information in this document is provided in good faith and is intended for guidance purposes only. Any accompanying drawings are solely for illustrative purposes. Since Agnitek cannot oversee installation methods or ensure site conditions, no warranties, expressed or implied, are intended regarding the products' actual performance. We do not accept liability for any loss, damage, or injury from using this information. Please take a look at the test reports displayed on a relevant AGNI-System webpage for all compliance specifics.



8 Clare St Bayswater  
VIC 3153, AUSTRALIA  
[www.agnitek.com.au](http://www.agnitek.com.au)

Date 12.05.2025



# FIRESTOP CENTRE

Authorised New Zealand Distributor  
Ph (09) 483 4000 [www.firestopcentre.co.nz](http://www.firestopcentre.co.nz)

64 mm steel stud

System ID# FC361

2 layers of 13mm  
FR plasterboard

DN50mm Copper pipe with 13mm thick  
nitrile rubber insulation

AGNI-Black

AGNI-Sleeve

## Technical Information

Substrate	<ul style="list-style-type: none"><li>• Min. 64mm timber or steel stud wall with a minimum of two layers of 13mm (or greater) FR plasterboard on each side, with or without insulation.</li><li>• Min. 116mm concrete wall</li></ul>
Service range	From DN15mm up to DN50mm copper pipe with nitrile rubber insulation from 9mm up to 38mm thick
Annular gap	DN15mm - 9.8 - 11.2mm DN20mm - 6.8 - 11.5mm DN50mm with 13mm insulation - 10.5 - 12.5mm
AGNI-Products	DN50mm with 32mm insulation - 8.9 - 11.1mm AGNI-Black, AGNI-Sleeve
Protection installation	From both sides of the wall

## Compliance Information

Standards	AS1530.4-2014, AS4072.1-2005
FRR/FRL	-/120/120
Reference	RIRF25008

### Disclaimer

Agnitek reserves the right to modify product specifications without prior notice due to its ongoing research, development & certification programme. The information in this document is provided in good faith and is intended for guidance purposes only. Any accompanying drawings are solely for illustrative purposes. Since Agnitek cannot oversee installation methods or ensure site conditions, no warranties, expressed or implied, are intended regarding the products' actual performance. We do not accept liability for any loss, damage, or injury from using this information. Please take a look at the test reports displayed on a relevant AGNI-System webpage for all compliance specifics.



# FIRESTOP CENTRE

Authorised New Zealand Distributor  
Ph (09) 483 4000 [www.firestopcentre.co.nz](http://www.firestopcentre.co.nz)

System ID# FC361

DN50mm Copper pipe with 32mm thick nitrile rubber insulation

64 mm steel stud

2 layers of 13mm FR plasterboard

AGNI-Black

AGNI-Sleeve

## Technical Information

Substrate	<ul style="list-style-type: none"><li>• Min. 64mm timber or steel stud wall with a minimum of two layers of 13mm (or greater) FR plasterboard on each side, with or without insulation.</li><li>• Min. 116mm concrete wall</li></ul>
Service range	From DN15mm up to DN50mm copper pipe with nitrile rubber insulation from 9mm up to 38mm thick
Annular gap	DN15mm - 9.8 - 11.2mm DN20mm - 6.8 - 11.5mm DN50mm with 13mm insulation - 10.5 - 12.5mm DN50mm with 32mm insulation - 8.9 - 11.1mm
AGNI-Products	AGNI-Black, AGNI-Sleeve
Protection installation	From both sides of the wall

## Compliance Information

Standards	AS1530.4-2014, AS4072.1-2005
FRR/FRL	-/120/120
Reference	RIRF25008

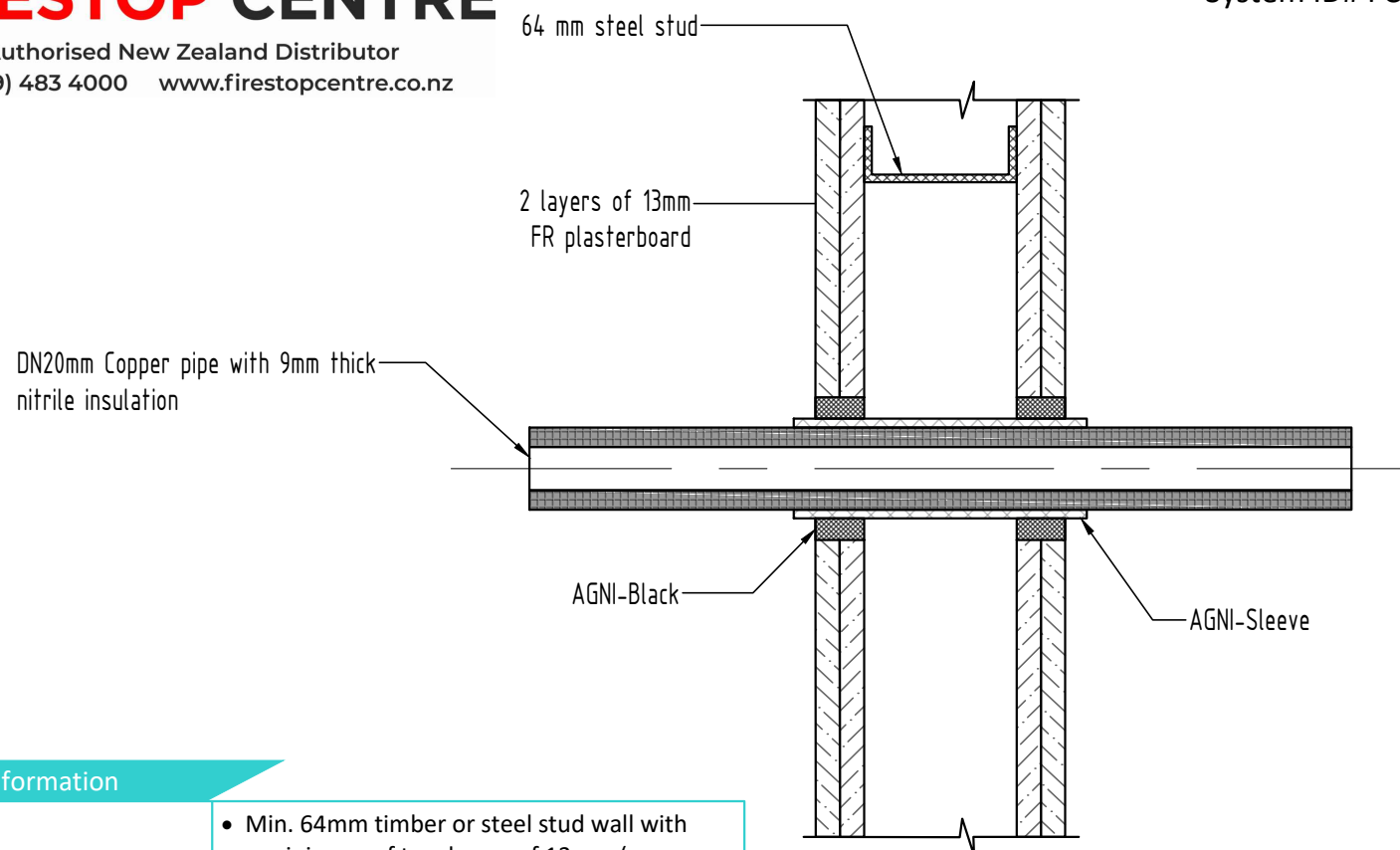
### Disclaimer

Agnitek reserves the right to modify product specifications without prior notice due to its ongoing research, development & certification programme. The information in this document is provided in good faith and is intended for guidance purposes only. Any accompanying drawings are solely for illustrative purposes. Since Agnitek cannot oversee installation methods or ensure site conditions, no warranties, expressed or implied, are intended regarding the products' actual performance. We do not accept liability for any loss, damage, or injury from using this information. Please take a look at the test reports displayed on a relevant AGNI-System webpage for all compliance specifics.



8 Clare St Bayswater  
VIC 3153, AUSTRALIA  
[www.agnitek.com.au](http://www.agnitek.com.au)

Date 12.05.2025



## Technical Information

Substrate	<ul style="list-style-type: none"><li>• Min. 64mm timber or steel stud wall with a minimum of two layers of 13mm (or greater) FR plasterboard on each side, with or without insulation.</li><li>• Min. 116mm concrete wall</li></ul>
Service range	From DN15mm up to DN50mm copper pipe with nitrile rubber insulation from 9mm up to 38mm thick
Annular gap	DN15mm - 9.8 - 11.2mm DN20mm - 6.8 - 11.5mm DN50mm with 13mm insulation - 10.5 - 12.5mm
AGNI-Products	DN50mm with 32mm insulation - 8.9 - 11.1mm AGNI-Black, AGNI-Sleeve
Protection installation	From both sides of the wall

## Compliance Information

Standards	AS1530.4-2014, AS4072.1-2005
FRR/FRL	-/120/120
Reference	RIRF25008

### Disclaimer

Agnitek reserves the right to modify product specifications without prior notice due to its ongoing research, development & certification programme. The information in this document is provided in good faith and is intended for guidance purposes only. Any accompanying drawings are solely for illustrative purposes. Since Agnitek cannot oversee installation methods or ensure site conditions, no warranties, expressed or implied, are intended regarding the products' actual performance. We do not accept liability for any loss, damage, or injury from using this information. Please take a look at the test reports displayed on a relevant AGNI-System webpage for all compliance specifics.